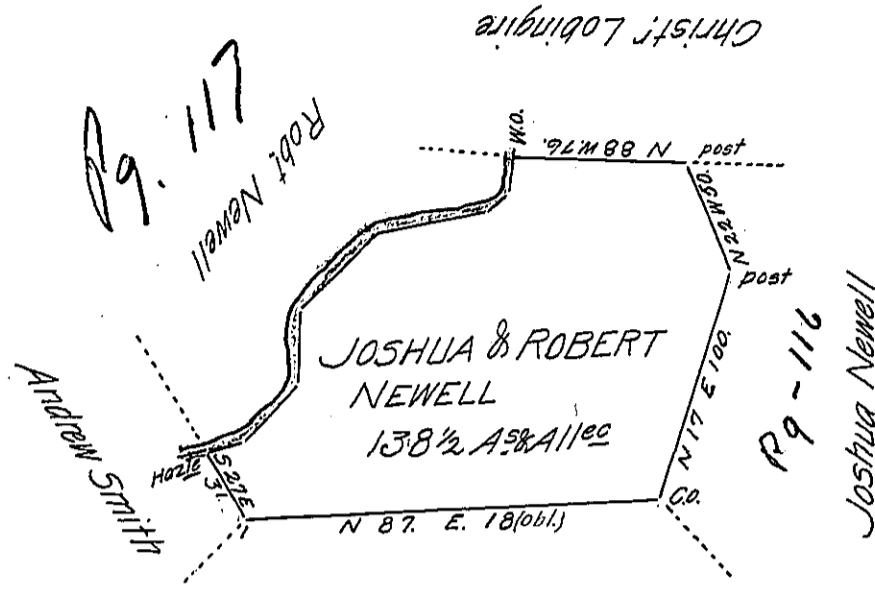


The Courses down the run
from the W.O.

- 56 W 13 1/2
- 537 W 9 1/2
- 577 W 53 1/2
- 544 W 41 1/2
- 51 W 27 1/2
- 540 W 36
- 566 W 18 to a
Hazle



Robert Keas

C-102-190

In Pursuance of part of a Warrant bearing date August 24th 1791 Surveyed May 24th 1795 unto Joshua and Robert Newell the above discribed Tract of Land Situate in Mount pleasant Township Westmoreland County Containing One hundred and thirty eight Acres & Allowance of six Per Cent for roads &c.

Benj. Lodge D.S.

To Daniel Brodhead Esq. }
Surveyor General.

IN TESTIMONY that the above is a copy of the original remaining on file in the Department of Internal Affairs of Pennsylvania, made conformably to an Act of Assembly approved the 16th day of February, 1833, I have hereunto set my Hand and caused the Seal of said Department to be affixed at Harrisburg, this fourteenth day of February 1906.

Isaac R. Brown
Secretary of Internal Affairs.